

## Grampians National Park Access Update

November 3rd 2017

From time to time the Grampians National Park may have temporary closures in place to address damage caused by storms, floods and bushfires. Regular maintenance programs, pest plant and animal programs and major construction projects may also require temporary closures. **Prior to heading out into the park, always check for any closures on the list below.** Check in at Brambuk the National Park and Cultural Centre, 2.5km south of Halls Gap township; check for other related publications online at: <http://parkweb.vic.gov.au/explore/parks/grampians-national-park>, call 131963 or ask at an accredited Visitor Information Centre.

### Closed Day Visitor Sites

- Golton Gorge Picnic area
- Ngamadjidj Car Park

### Closed Roads and Tracks

- Floods have caused washouts and damage on many roads and tracks. Closures in place
- Some seasonal closures will not open November Long Weekend due to repairs pending
- Please refer to the weekly road report for detailed information.

### Closed Campgrounds

- First Wannon Hikers Camp (GPT Redevelopment)
- Troopers Creek Campground (GPT Redevelopment)
- Coppermine Bush Camps (GPT Redevelopment)
- Dispersed Bush Camping is currently not permitted in the Northern Grampians
- Briggs Bluff Hiker Campsite GR 294 055 & Mt Difficult Hiker Campsite GR 284 030 (consolidation)

### Closed Walking Tracks

- Golton Gorge walking track (Redevelopment planned)
- Ngamadjidj walking track (Redevelopment planned)
- Mt Stapylton Loop (Pohlner rd to Summit East section – redevelopment planned)
- Mt Difficult walking track (from Troopers Ck campground See realignment notes)
- Major Mitchell Plateau (GPT Redevelopment works)
- Longpoint East Hikers camp to Plantation Campground/Boroka Lookout (fire and GPT redevelopment works required)

### Rock Climbing Access

- Main Wall (Summerday Valley) (closed - fire damage and cultural heritage redevelopment pending)

### Walking Track Realignments

Recently, Mt Difficult (Gar) & Briggs Bluff Overnight Walk reopened with modifications. Start from Beehive Falls car park instead of Troopers creek campground (which has closed) or Mt Difficult Rd/Longpoint Fireline. Longpoint East and Longpoint West hiker camps are open. Notify use via Trip Intention Forms. See GNP Overnight Walking Information sheet for details. Download walk information at:

<http://parkweb.vic.gov.au/explore/parks/grampians-national-park>

### GRAMPIANS PEAKS TRAIL

Stage 2 planning and on ground works are underway on what will be one of Victoria's iconic long distance walks. Existing sections of trail are being upgraded:

- Chatauqua Peak summit works under construction. Access summit via Bullaces Glen only
- Major Mitchell Plateau (Mt William through to Jimmy Creek and Kalyrna Falls access to Plateau) Closed until Late December
- Mt Difficult East Escarpment re-development (Briggs Bluff area – Longpoint East – Boroka lookout)
- Machinery in operation, please respect closures.

### Upcoming Projects: (Dates to be Confirmed)

- Mt Stapylton re-development (Summit access)
- Briggs Bluff to Mt Difficult
- Mt Abrupt re-development

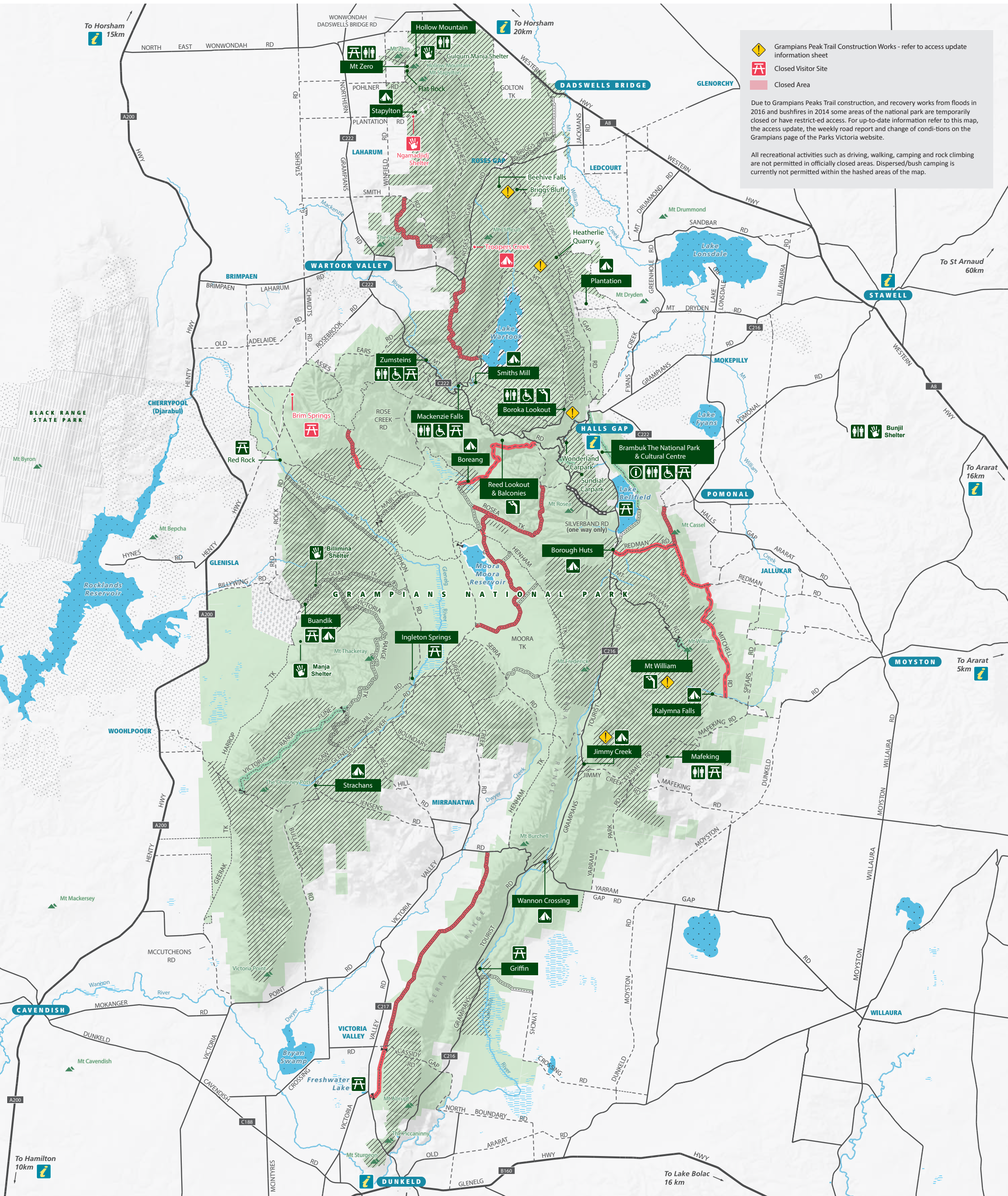
### Recent Re-openings:

- Mt Sturgeon
- Lake Wartook Lookout

### Further Information

For updates on the many camping, walking and driving opportunities in the park, call into Brambuk, the National Park and Cultural Centre in Halls Gap, visit a local Visitor Information Centre or call Parks Victoria on 13 19 63.





Grampians Peak Trail Construction Works - refer to access update information sheet  
 Closed Visitor Site  
 Closed Area

Due to Grampians Peaks Trail construction, and recovery works from floods in 2016 and bushfires in 2014 some areas of the national park are temporarily closed or have restricted access. For up-to-date information refer to this map, the access update, the weekly road report and change of conditions on the Grampians page of the Parks Victoria website.

All recreational activities such as driving, walking, camping and rock climbing are not permitted in officially closed areas. Dispersed/bush camping is currently not permitted within the hashed areas of the map.

- |                     |                     |                        |                        |               |                                 |                                |
|---------------------|---------------------|------------------------|------------------------|---------------|---------------------------------|--------------------------------|
| Park information    | Picnic area         | Aboriginal art shelter | 4WD                    | One-way road  | Softwood plantation             | Gate - Management vehicle only |
| Visitor info centre | Lookout             | Highway                | Mgmt. vehicle only     | National park | Waterbody                       |                                |
| Toilets             | Camping/picnic area | Sealed road            | Temporary road closure | State park    | Wetland                         |                                |
| Disabled access     | Basic bush shower   | Unsealed road          | 4WD seasonal closure   | State forest  | Dispersed camping not permitted |                                |

