



## eNews Direct To Members

*This ENews is a new format that Four Wheel Drive Victoria will be sending on a monthly basis or as needed, directly to your Inbox. As a member of Four Wheel Drive Victoria you will have the option to OPT OUT if you do not want this communication from us. If you do not opt out you will continue to receive these emails. You can opt out at any time.*

### The latest news from Four Wheel Drive Victoria

**September 2022**

#### **Four Wheel Drive Victoria AGM – Save the Date**

This is notice for the Four Wheel Drive Victoria Annual General Meeting. Held on the 14<sup>th</sup> of November 2022 at the Manningham Hotel. More details about the night will be sent out soon, club executives, please check your emails for these in the coming weeks.

#### **Victorian 4WD Show**

The Victorian 4WD Show is officially back for 2023! It will be held on Sunday, 19<sup>th</sup> February 2023 at Lardner Park. It is the longest running 4WD show in Australia and makes for a great day for all who attend. Bookings for clubs and exhibitors will be open shortly, please contact Chris Camier, Victorian 4WD Show Organiser, [vic4wdshow@gmail.com](mailto:vic4wdshow@gmail.com)



#### **Cruiser Khana**

This November TLCCV's Crusier Khana is running again. This skills based competition makes for an unforgettable weekend. Entrants from all 4WD Clubs are welcomed with the chance to win great prizes! An early bird discount of \$185 is available until 30<sup>th</sup> of September, which covers both driver and navigator, 2 nights camping and Presentation dinner. To enter please email [enquires@cruiserkhana.com.au](mailto:enquires@cruiserkhana.com.au)

#### **Do You Log Your Volunteer Work?**

Our volunteers do a fantastic job helping the community with Four Wheel Drive Victoria projects such as Camp Host, Track Clearing and High-Country Hut maintenance. Even your track clearing you may do on a trip counts, so club trip leaders are encouraged to log time spent clearing tracks and send in your volunteer hours worked. It is extremely important to Four Wheel Drive Victoria to be able to actually represent the hard work our amazing volunteers do on a regular basis



Image 1 LROCG Volunteer Work. Photo by Greg Rose

### Gippsland Great Outdoors Show

The Shepparton Great Outdoors Expo has come and gone. From all reports a great time was had and the Goulburn Valley 4WD Club had an excellent event from a club perspective! Flying the banner for Four Wheel Drive Victoria and also their own club it was a weekend of fun, mates and prospective members.

The next Great Outdoors Expo is the Gippsland Show. Held at the Sale Racecourse, Maffra Rd, Sale over the 25<sup>th</sup>, 26<sup>th</sup> and 27<sup>th</sup> of November. It will make for a great weekend away to get down and check out the show.

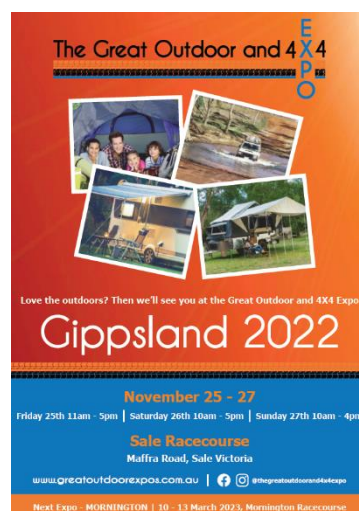


Image 2 Peninsula 4x4 Camp Host

### Camp Host

Winter has ended and Spring is here! This means there are plenty of opportunities for your club to undertake a Camp Host for 2022. Both AFL Grand Final Day and the Melbourne Cup weekend are nearly here! They are a great way to help out and volunteer with DELWP and Parks Victoria. Your club becomes a point of knowledge for others visiting the area whilst showcasing your club to all visitors. Four Wheel Drive Victoria is also looking to increase the payment for clubs from \$250 to \$300 to help encourage more clubs to get involved in this great program.

### Seasonal Closures

Seasonal Road Closures are in force until the 27<sup>th</sup> of October 2022. Please follow these track closures and plan ahead to make sure you are not caught out. A full list of closures from both Parks Victoria and DELWP can be found on Four Wheel Drive Victoria's website, [www.fwdvictoria.org.au](http://www.fwdvictoria.org.au), under Resources - > Track Closures.

**Please note:** Four Wheel Drive Victoria has an SOP (Standard Operating Procedure) with both Parks Victoria and DELWP regarding track closures. Before any track closure is signed off, Four Wheel Drive Victoria must be notified and sign off on the closure before it becomes official. All seasonal closures are sent to Four Wheel Drive Victoria prior to being listed and are passed onto club executives for feedback to supply to Parks Vic/DELWP.

### Trackwatch

We need interesting articles and high-resolution photos about your club for Trackwatch magazine. Trackwatch is distributed far beyond our clubs and is seen by many organizations as well as Government agencies and politicians, so it is a terrific way to show your club to the world.

Please email your articles and photos to [projects@fwdvictoria.org.au](mailto:projects@fwdvictoria.org.au)

If you don't want to receive a hard copy of Trackwatch and would rather read it electronically, send an email to the Four Wheel Drive Victoria office, [office@fwdvictoria.org.au](mailto:office@fwdvictoria.org.au). The latest 4 issues of Trackwatch are always available to read on the Four Wheel Drive Victoria website. [www.fwdvictoria.org.au](http://www.fwdvictoria.org.au)



[www.fwdvictoria.org.au](http://www.fwdvictoria.org.au)

To OPT OUT just click [here](#) or reply

Four Wheel Drive Victoria is a Registered Training Organisation (RTO21605)

Our privacy policy is available for viewing [HERE](#)