

# GEOLOGICAL SURVEY ROLLING ALONG FOR 70 DAYS

The Geological Survey of Victoria, in collaboration with Geoscience Australia, AuSCOPE and Geological Survey of NSW, is set to study Victoria's north-east region to a depth of 50 kilometres below the Earth's surface, to understand how the State evolved from an ocean 500 million years ago to the landscape that is seen today.

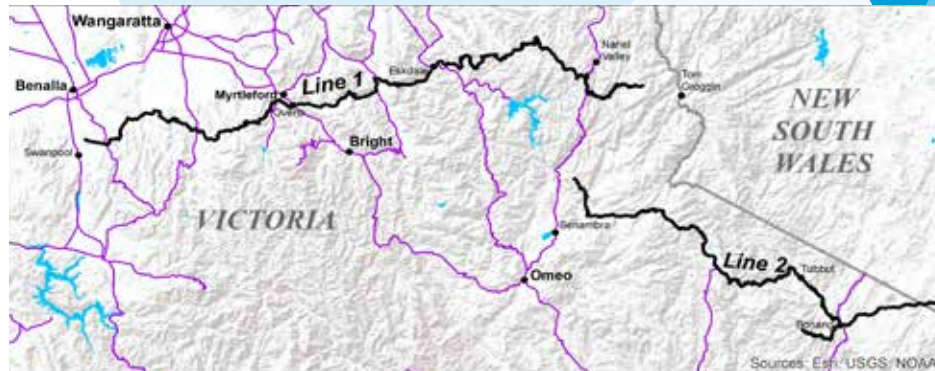
The survey crew will use specialist trucks to image the Earth's crust along the two survey lines, stretching 480 kilometres from Benalla to Tom Groggin and from Benambra to Bendoc, close to the NSW border.

**WHEN** Surveyors have commenced pegging the route. The trucks will commence the seismic survey on 5th March 2018, subject to weather.

**DURATION** It will take approximately 70 days to conduct the survey across Crown land, local roads, lanes and tracks, and some private land, subject to weather conditions.

**THE FIRST 100 KILOMETRES** The survey commences off the Midland Highway near Swanpool on private property and then travels east towards Merriang. This 100 km stretch of survey will take about 14 days.

**TRAFFIC MANAGEMENT** As a public safety precaution, traffic management will be in place along the survey route. In most areas, only minor delays are expected, however there may be temporary closures of roads, lanes or tracks where it will not be safe for vehicles to pass. Upcoming road closures will be published weekly on our website ([earthresources.vic.gov.au/evgi](http://earthresources.vic.gov.au/evgi)), by VicRoads and will be available locally.



**PUBLIC SAFETY** Traffic management is there to keep you and the survey crew safe. The survey involves multiple vehicle movements and large machinery, please adhere to all temporary reduced speed limits and signage and requests from the survey crew. Thank you for your patience as we try to keep any delays to a minimum.

## FURTHER INFORMATION

Fact sheets are available from our website ([earthresources.vic.gov.au/evgi](http://earthresources.vic.gov.au/evgi)), along with our answers to frequently asked questions. The website will be updated weekly to indicate survey progress. Information about any temporary closures of roads, lanes or tracks can also be found on our web site.



For more details about the Eastern Victoria Geoscience Initiative please visit [earthresources.vic.gov.au/evgi](http://earthresources.vic.gov.au/evgi)  
call 136 186 or email  
[evgi.info@ecodev.vic.gov.au](mailto:evgi.info@ecodev.vic.gov.au)